

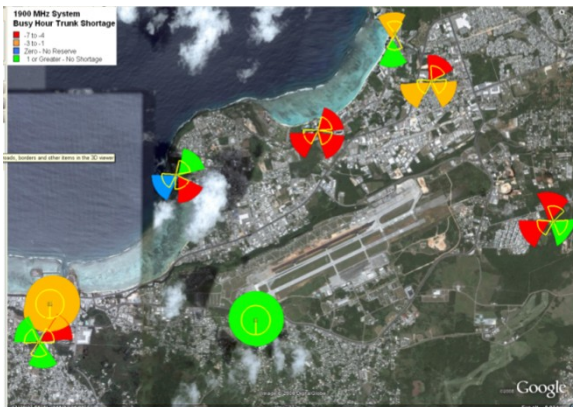
## 4G Unwired - RF Engineering Services

We have worldwide wireless network design experience to assist your team. Our clients include Tier 1, 2, & 3 service providers, tower companies, integrators and vendors.

- **LTE and WiMAX Certified!**
- 3G/4G RFQs and Analysis
- Vendor Management
- UMTS, GSM, CDMA RF Design
- Cellular, 700, AWS and WISP Design
- Traffic Engineering and Capacity Studies
- Drive Testing and Network Optimization
- Microwave & Broadband System Design
- Technical Training for Engineers
- DAS and In-building Solutions

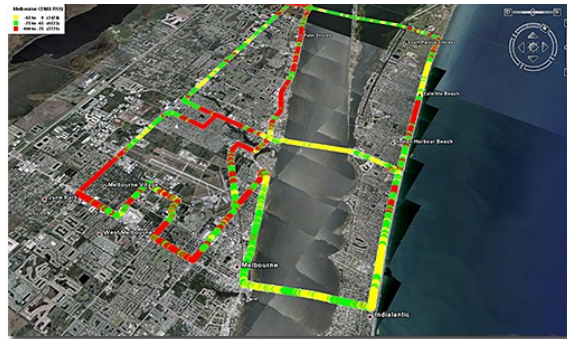
### Why 4G Unwired?

4G Unwired helps clients maximize revenues from their wireless networks. We do this through efficient RF design and optimization to provide Improved Key Performance Indicators (KPIs) and increased MOUs. 4G's technical expertise and sophisticated engineering software allows our Senior RF engineers to better analyze and display site locations, RF coverage and drive test data. We are confident that 4G Unwired will add value to your projects and your team.

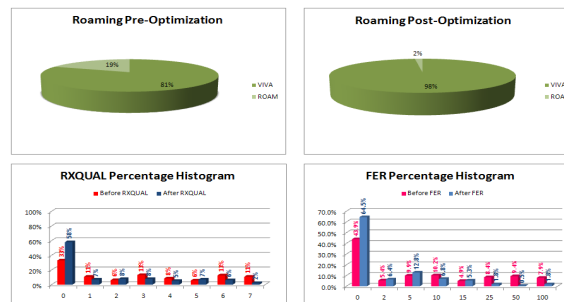


## Wireless Network Optimization Services

In an age of ever-tightening budgets, operators are seeking ways to maximize revenues from their existing networks. One of the fastest ways to increase revenues is through system optimization. 4G Unwired has 15+ years of experience optimizing UMTS, GSM and CDMA networks to ensure peak revenue-producing performance at a much lower price point than the vendors. Call us for a quote today!



4G Unwired Engineers have the skill sets, engineering software and test equipment to produce quantifiable improvements in Dropped Calls, Call Quality (QoS) and Minutes of Use (MOUs). Results are displayed in SkyView™ RF Mapping in Google Earth and can be easily shared with associates via the internet.



### 4G Unwired – Cost Effective and Accurate

4G Unwired, Inc. (4G) is a wireless consulting firm that provides RF Engineering Design and Optimization services for LTE, WiMAX, UMTS, GSM, CDMA, 700 MHz, AWS, WISP and broadband radio networks. Located in Melbourne, Florida, our senior engineering staff has worked together as a team for over 15 years providing cost-effective technical solutions for wireless carriers, vendors, integrators and tower companies. We've helped our clients move from 2G to 3G – and now to Fourth Generation - 4G - networks. 4G Unwired serves both US and international customers and is active in CANTO, Rural Cellular Association and Rural Telecom Group.

**4G Unwired, Inc.**  
 551 S. Apollo Blvd., Suite 207  
 Melbourne, FL USA 32901  
 +1 877-215 - 8494

[www.4GUnwired.com](http://www.4GUnwired.com)

[www.4GUnwired.com](http://www.4GUnwired.com)

DESIGNED BY  
ENGINEERS -  
FOR ENGINEERS



### SkyView RF Mapping™ Services

SkyView RF Mapping™ is a more effective way to manage and display wireless RF Coverage and Site Data in 3D in Google Earth. 4G Unwired engineers have designed SkyView RF Mapping™ to help increase sales & enhance Customer Service. The platform provides a means of assisting Engineering and O&M functions to visualize the end product – their system RF coverage and quality data - from any computer at home, office or while traveling.

SkyView Microwave & Broadband Engineering Software is a faster and more cost effective way to design and display Microwave or Broadband Networks - in 3D in Google Earth.

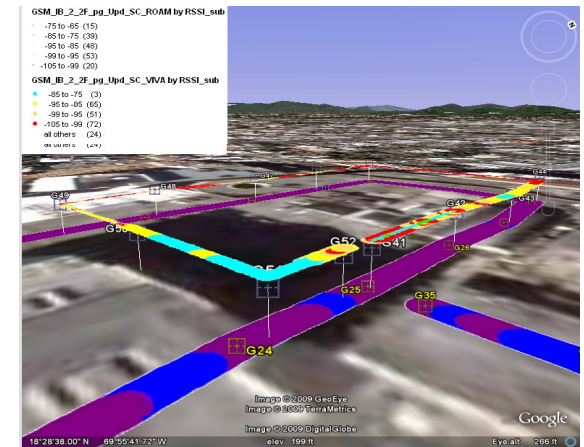
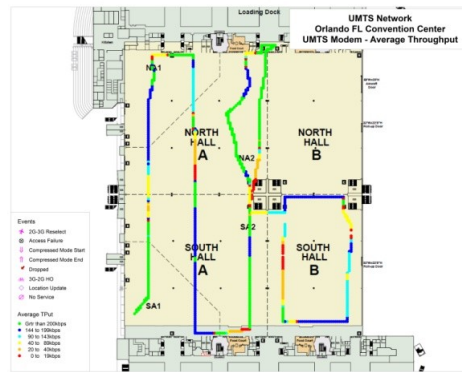
SkyView Microwave™ instantly produces line of sight (LOS) Path Profiles and Reliability Calculations on an Easy to Read screen in Google Earth to allow improved site selection, path reliability and reduced CAPEX. Because it produces Google Earth KMZ files, system designs & technical information can easily be shared worldwide via e-mail or FTP.



- One-To-Many: Easily analyze multiple site path criteria from a single reference site.
- Quickly Import site and path data from existing databases or spreadsheets.
- Filter proposed paths based on selectable path engineering criteria such as Distance, Reliability % and Fresnel Zone Clearance
- Path Profiles, Link Budgets and Reliability calculations automatically calculated for each path in a single pass – Easy to view, filter, access, and print.
- Easily move sites or change centerlines and view results instantly in Google Earth.
- Share output files via the web.

### KPI Mapper displays In-Building & Drive Test Data in MapInfo and Google Earth!

- Easily converts ZK Sam files to MapInfo Work Spaces with one touch export to Google Earth
- Works with all technologies - LTE, UMTS, CDMA/EVDO GSM and GPRS/EDGE
- Import Floor plan image for accurate in-building data analysis
- Easy to use one click maps – Displays all Leading KPIs mapped by Technology – RSSI, FER, Ec/Io, RxQual, Eb/No, RSCP,
- **NEW – Direct Mapping to Google Earth Perfect for Performance Engineers & Techs**



SkyView RF Mapping™ from 4G Unwired can display both outdoor & In-Building coverage without the need for building floor plans as shown above on this two story building.



[www.SkyView3DSoftware.com](http://www.SkyView3DSoftware.com)

SkyView Software Development, LLC, a subsidiary of 4G Unwired, Inc., is a pioneer in the development of Google Earth based wireless Engineering Software.

**Toll Free +1 877-215-8494**