

X WIZARD



The success of your wireless network depends on achieving optimal coverage, capacity, and quality of voice and data systems. However, the rapidly growing demand for more advanced service offerings and a smaller pool of stronger competitors require accurate modeling to prevent costly false starts. x-Wizard™, Optimi's high-precision network planning solution, helps you rapidly prepare for network growth and manage next-generation technology migrations.



**ABOUT X-WIZARD**

x-Wizard increases capital efficiency in 2, 2.5 and 3G environments. The solution's advanced modeling enables highly reliable mapping, calculation, and reporting for superior network design, and delivers optimal network capacity and performance.

With a unique ability to model network conditions at deployment, x-Wizard has been proven to reduce the typical design cycle up to 20%. Users can create "what-if" scenarios that can be tested and refined prior to implementation. x-Wizard combines empirical data with unique clutter and algorithm tuning to deliver the highest model accuracy possible. In addition, it features advanced visualization tools that support real-time complex network mapping, grid relief modes, Smart Analysis, zoom analysis, and others that significantly improve analytical clarity.

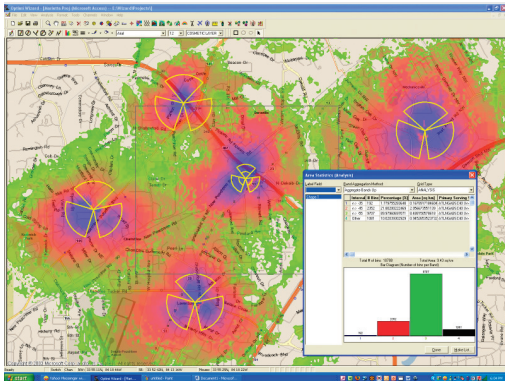
x-Wizard supports client/server deployment and simultaneous users accessing the same data. An easy-to-use GUI allows users to manage interference by determining how network loading affects Quality of Service (QoS). x-Wizard goes beyond the typical interference model with forward and reverse link QoS predictions, as well as Monte Carlo Simulations that predict BER, FER, and QoS. x-Wizard accepts data from all drive test and network infrastructure vendors. This data can be used to update the network configuration database, improve the prediction

**Benefits**

- » Increases capital efficiency and reduces spending with pre-launch testing and problem resolution.
- » Improves ROI with seamless system integration.
- » Supports rapid migration of multiple technologies, including GSM, UMTS-FDD, EDGE, 1xRTT, IS-95, 1xEVDO, CDMA2000, iDEN, TDMA and AMPS.

*[continued on back]*

X WIZARD



[continued from front]

accuracy of the mathematical models, and to check the integrity of changes made in the network.

With x-Wizard, critical factors such as overall network design, estimated capacity, and service performance can be evaluated proactively. Access to pertinent data eliminates the inaccuracy and high cost of network trials, and assures the best possible network performance at system build-out.

x-Wizard is a novel, flexible solution that adapts to a variety of programs, including Oracle and Microsoft® Access. It also flawlessly supports other popular third-party software solutions, such as ComOpt® and WaveSight™. x-Wizard integrates into the Optimi x-Platform for direct access to our other highly innovative network optimization tools, such as x-ACP™ and x-AFP™. Data exported using x-Wizard can be read by most other applications, making it an excellent source for all RF and Core Network applications.

x-Wizard supports all major technologies, with analytical algorithms, accurately modeled multiple wireless technologies, and frequency bands within the same network. Thus, it is often used for rapid migration to new technologies, and to manage and efficiently allocate resources between those environments.

**FEATURES**

- Custom mapping interface for flexibility and speed; operates simultaneously with third-party applications, including Microsoft® databases and MapPoint®, MapInfo® and Oracle.
- Advanced mathematical modes to predict end-user quality that are not available with traditional solutions.
- Acts as a data source for all RF and Core network applications.

**USE CASES**

- Enables engineers to manage and allocate spectrum more efficiently in multi-technology environments. For example, it helps carriers migrate from GSM to UMTS technology.
- Facilitates the introduction of new 3G advanced data services on hybrid UMTS networks.

**SUMMARY**

If you'd like to reduce the costs and eliminate potential errors associated with planning your network, trust only the best. x-Wizard, the industry's leading network planning solution, provides you with a comprehensive outlook of network performance before you roll out service, ensuring you greater return on investment.

**About Optimi**

Optimi is a global innovator of fully customizable spectrum design, planning, and optimization solutions for new wireless technologies. Optimi delivers cutting-edge, integrated applications that improve network performance, while reducing client operating costs and capital expenditures. The Optimi team of professionals consists of esteemed published authors, with more than 50 registered patents, who offer advanced technical knowledge, combined with sound, practical operations expertise.

---

To find out what Optimi can do for your wireless network, contact our consultants at:

**1 404 249 9559**  
**+34 952 028519**

Or visit us on the Web at:  
**www.optimi.com**

---